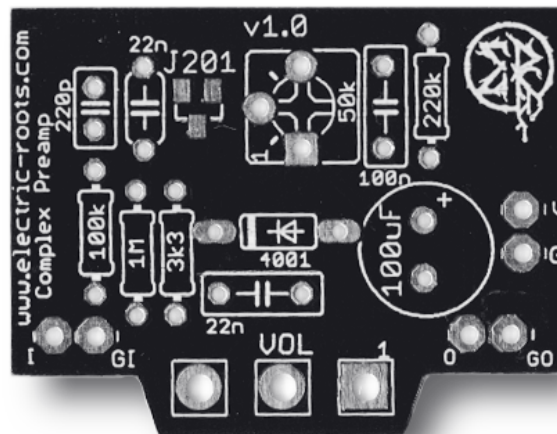




COMPLEX PREAMP

If you like the sound of those old tape machines from the 70's, our Complex Preamp is the right choice for you! With its unique sound and the very small footprint it is the perfect addition to any of your projects.



26x34mm

Complex Preamp @ Electric Roots
Version 1.0
10/21/2020



Knobs

VOL Controls the output volume

BOM

Resistors	
R1	N/A
R2	1M
R3	3k3
R4	50k
R5	220k
R6	100k

Capacitors	
C1	220pF
C2	22nF
C3	100nF
C4	22nF
C5	100uF _(elec)

Transistors	
Q1	SST5457

Diodes	
D1	1N4001

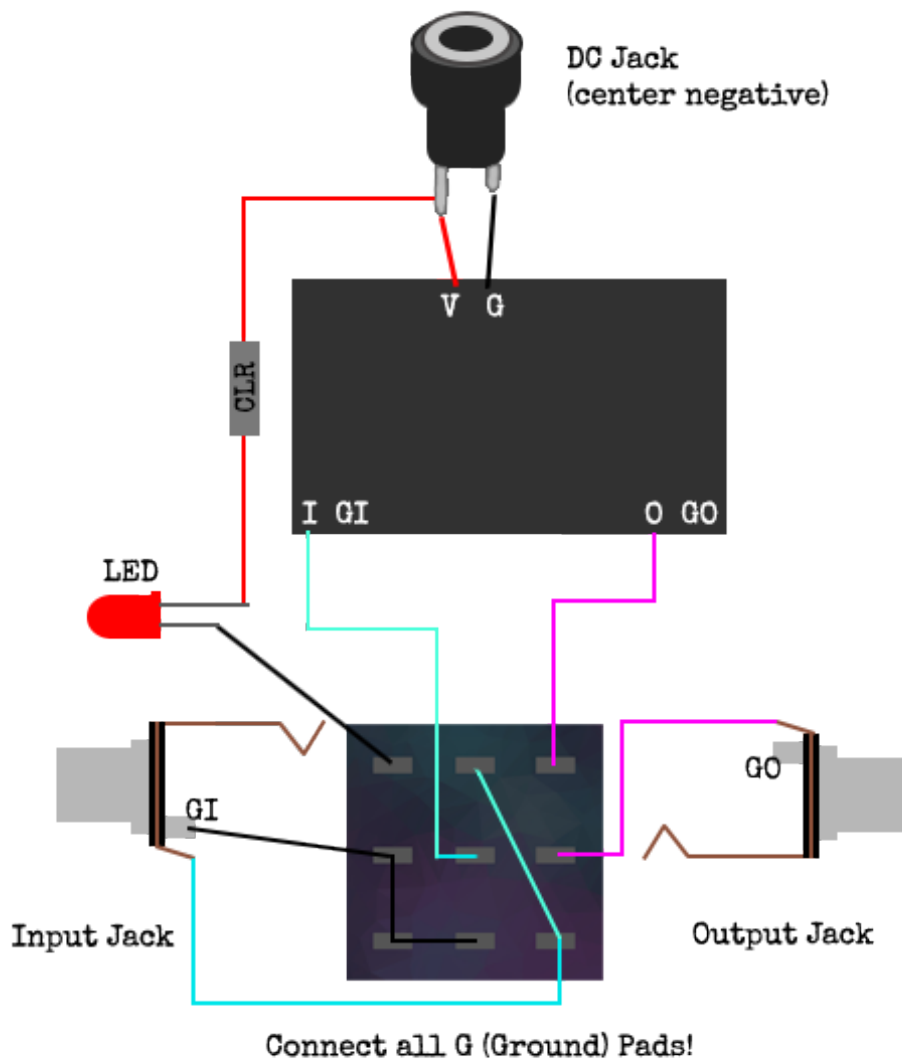
Potentiometers	
VOL	B500k
TRIM	100k

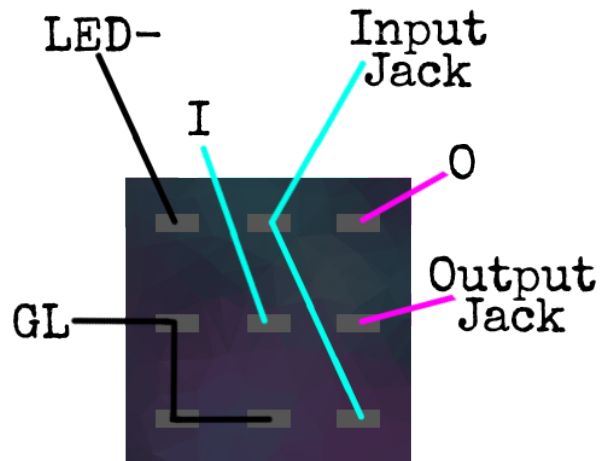


Suggestions

Beware of Counterfeit components, if you want quality products, order a kit, don't use ceramic capacitors over 1nF they tend to have microphonic characteristics in some setups.

Wiring





Notes

This PCB requires proper JFET biasing. They need to be biased to around 4,5V but you can also do it by ear. If you want to bias them correctly, you need to hook up the PCB to a 9V power supply. Take your multimeter and connect the black (negative) tip to ground and the positive tip to „Drain“ (Have a look at the schematic, it's marked with a „D“).

You can now read the voltage and carefully trim those pots one after another.

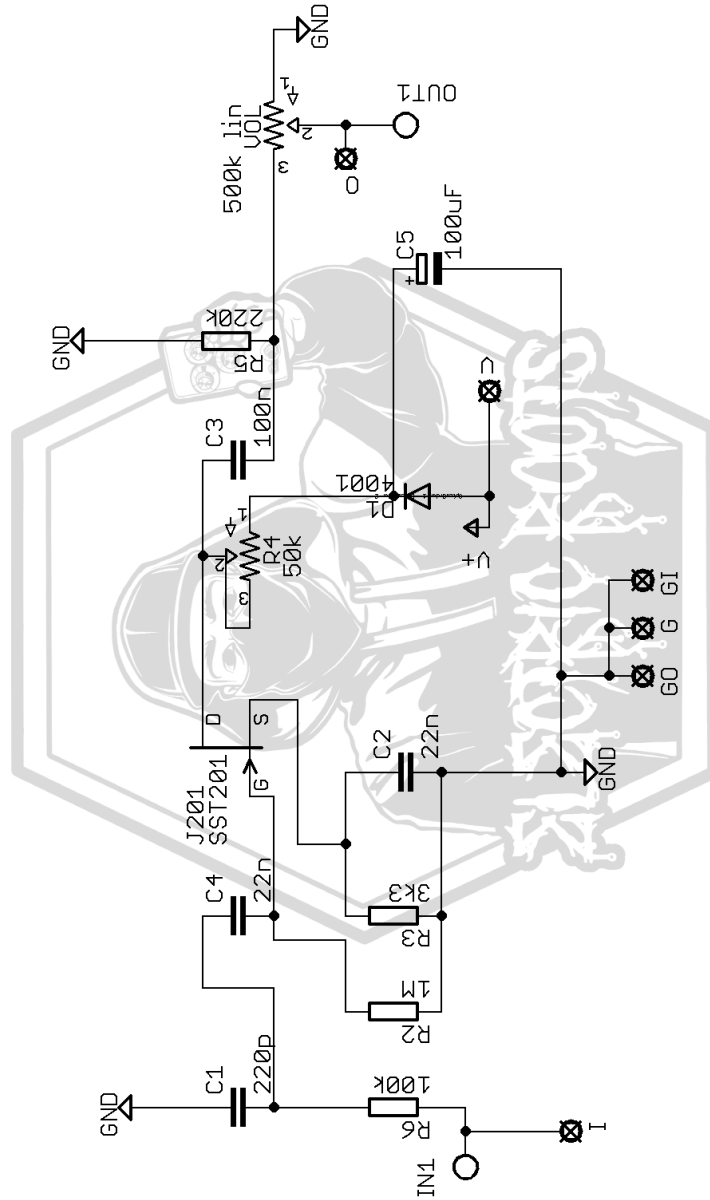
CLR is usually 4k7 – 10k. The value depends on how bright you like your status LED.

Mods

N/A



Schematic



COMPLEX PREAMP

v1.0

License

By buying and using this product you confirm that you have read, understood and accepted our Terms and Conditions (electric-roots.com/termsandconditions).