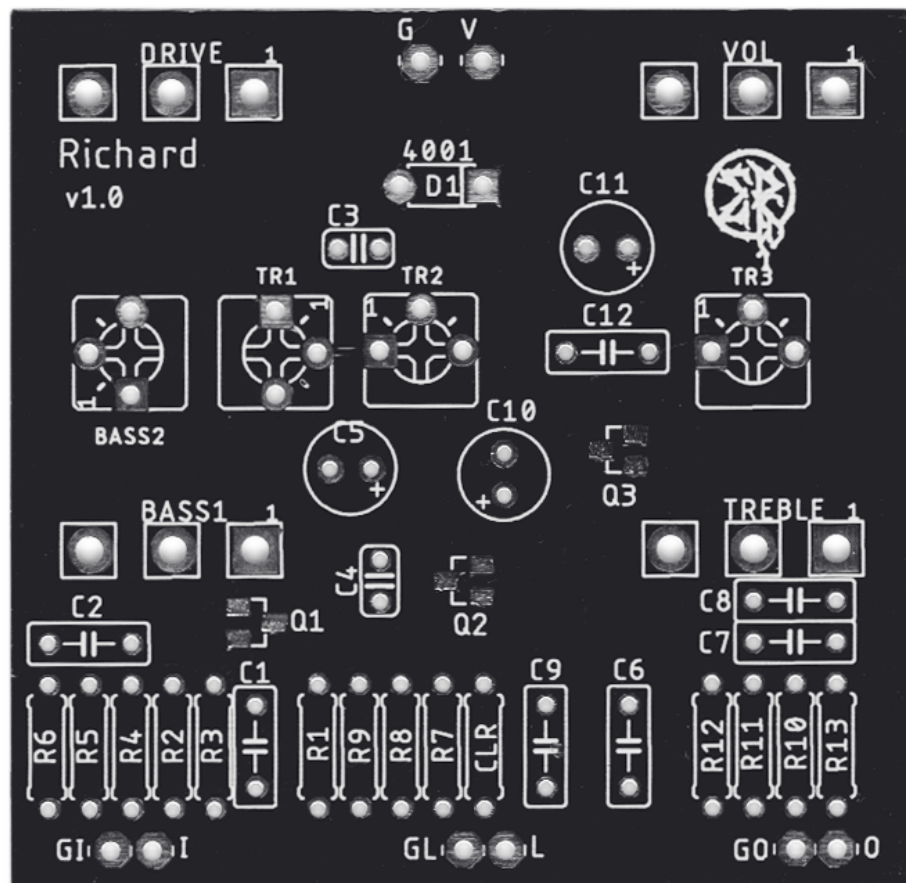




RICHARD

From relatively clean boost to flaming hot overdrive. Our Richard has it all! This JFET preamp is based on the Benson Chimera and has a very transparent and organic sound. If you already call yourself a soldering expert, you could implement an additional footswitchable boost with our Complex Preamp or Don't Do Crack to make Richard even more flexible.



zzxzzmm



Knobs

VOL	Controls the output volume
DRIVE	Controls the amount of gain
BASS	Controls the low frequencies
TREBLE	Controls the high frequencies

BOM

Resistors	
R1	1M
R2	220k
R3	1M
R4	1k
R5	10k
R6	470k
R7	470k
R8	1k
R9	10k
R10	100k
R11	1k
R12	10k
R13	47k

Capacitors	
C1	100nF
C2	22nF
C3	250pF
C4	470pF
C5	10uF _(elec)
C6	22nF
C7	22nF
C8	22nF
C9	2n2
C10	10uF _(elec)
C11	10uF _(elec)
C12	100nF

Transistors	
Q1	SST5457
Q2	SST5457
Q3	SST5457

Diodes	
D1	1N4001

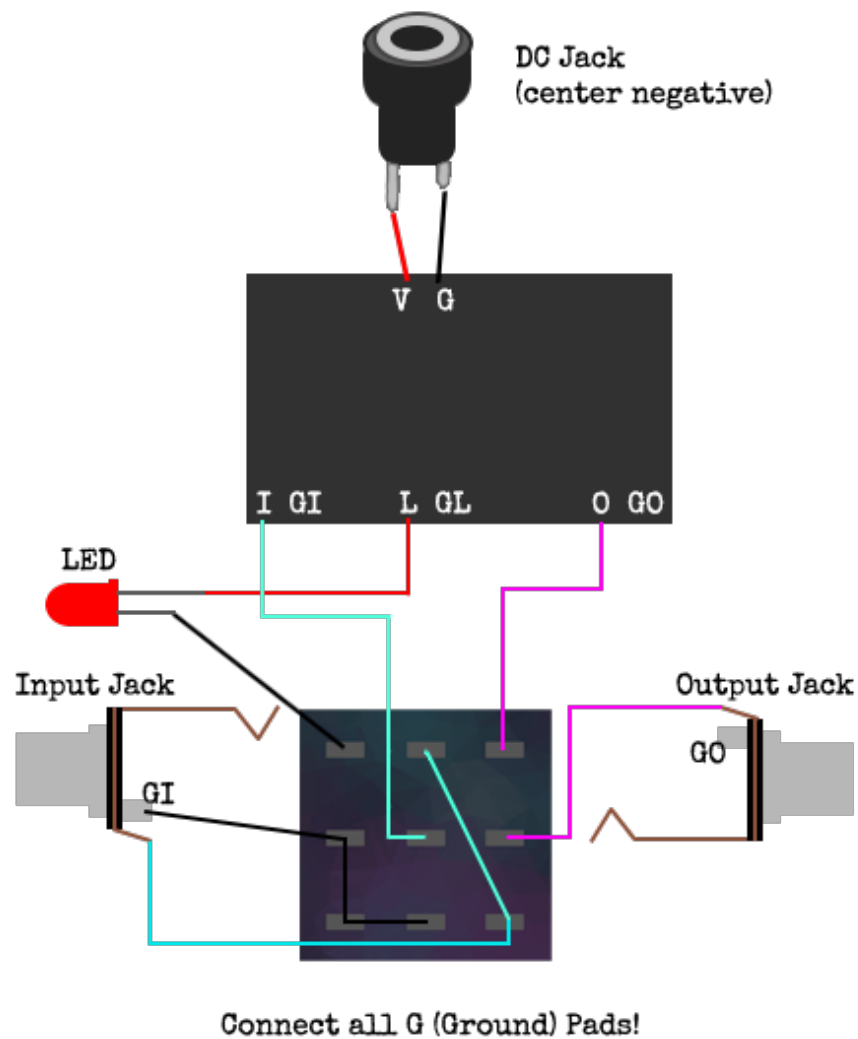
Potentiometers	
VOL	A100k
DRIVE	A1M
BASS	B1M
TREBLE	A250k
TRIM1	100k
TRIM2	100k
TRIM3	100k
BASS2	1M

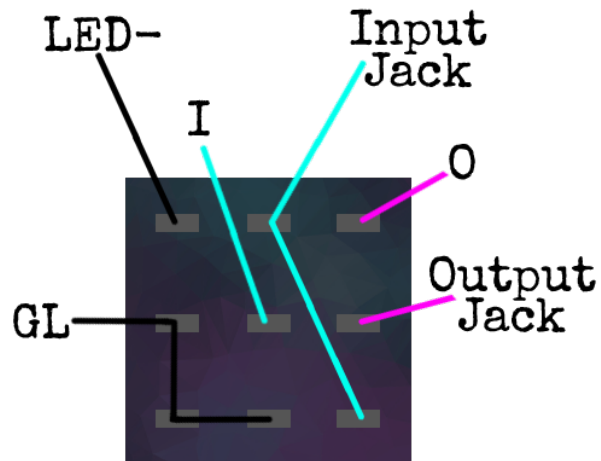


Suggestions

Beware of Counterfeit components, if you want quality products, order a kit , don't use ceramic capacitors over 1nF they tend to have microphonic characteristics in some setups.

Wiring





Notes

This PCB requires proper JFET biasing. They need to be biased to around 4,5V but you can also do it by ear. If you want to bias them correctly, you need to hook up the PCB to a 9V power supply. Take your multimeter and connect the black (negative) tip to ground and the positive tip to „Drain“ (Have a look at the schematic, it's marked with a „D“).

You can now read the voltage and carefully trim those pots one after another.

CLR is usually 4k7 – 10k. The value depends on how bright you like your status LED.

Mods

N/A

Schematic



License

By buying and using this product you confirm that you have read, understood and accepted our Terms and Conditions (electric-roots.com/termsandconditions).